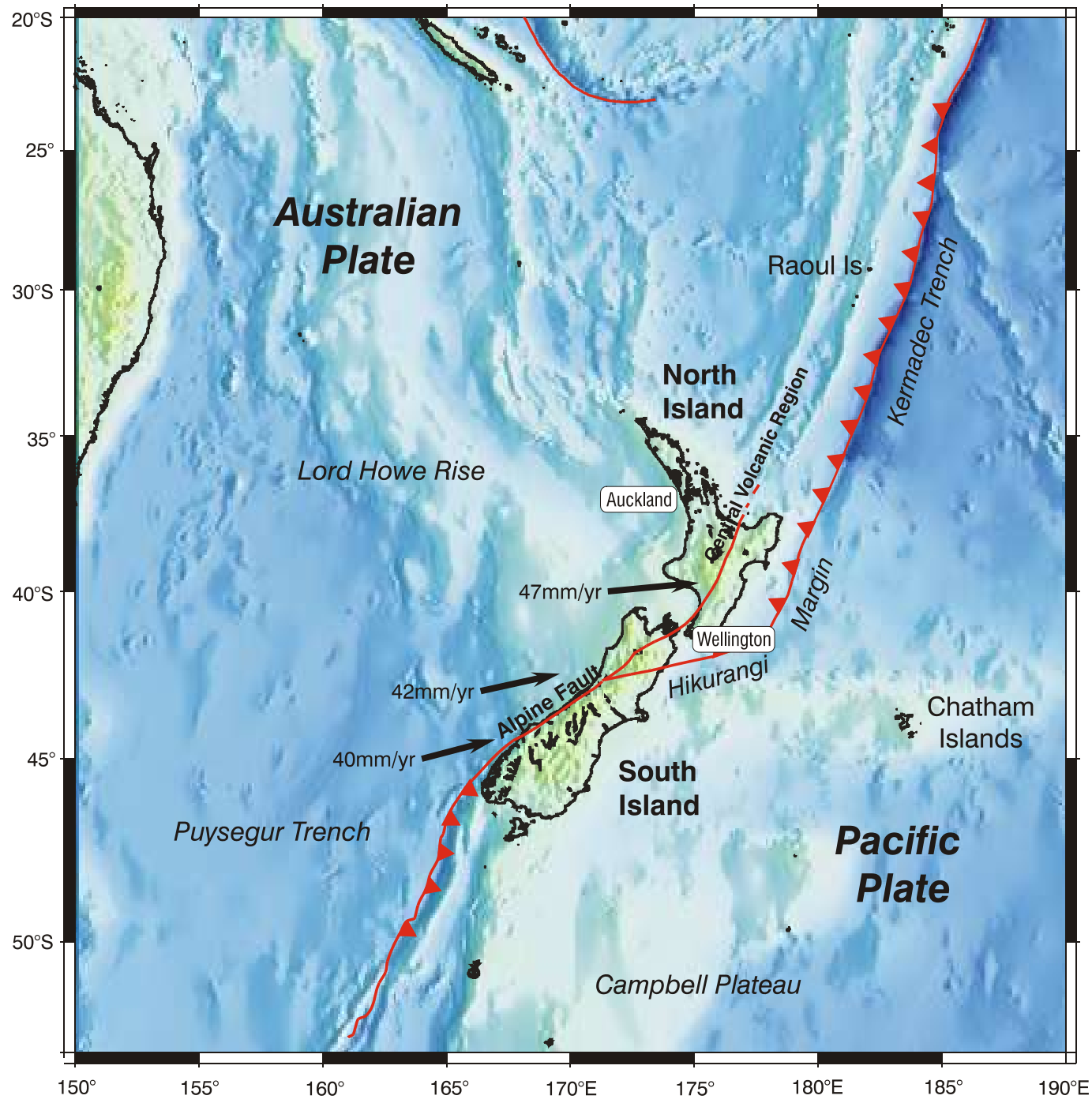


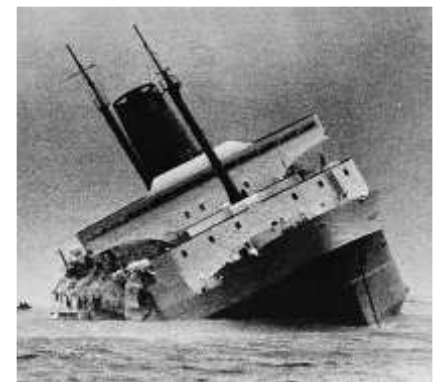
OBSERVATIONS ON THE RESPONSE FROM THE NATIONAL CONTROLLER'S PERSPECTIVE



Ministry of Civil Defence
& Emergency Management
Te Rākau Whakamarumarū

John Hamilton
Director





The Objective



"RESILIENT NEW ZEALAND – COMMUNITIES
UNDERSTANDING AND MANAGING
THEIR HAZARDS"

"AOTEAROA MANAHAU – HE PŪIOIO NGĀ HAPORI,
HE MĀRAMA KI Ō RĀTOU
PŪMATE ME TE WHAKAHAERE"

VISION

Responsibilities

Resilience: Risk Reduction, Readiness, Response, Recovery

It involves:

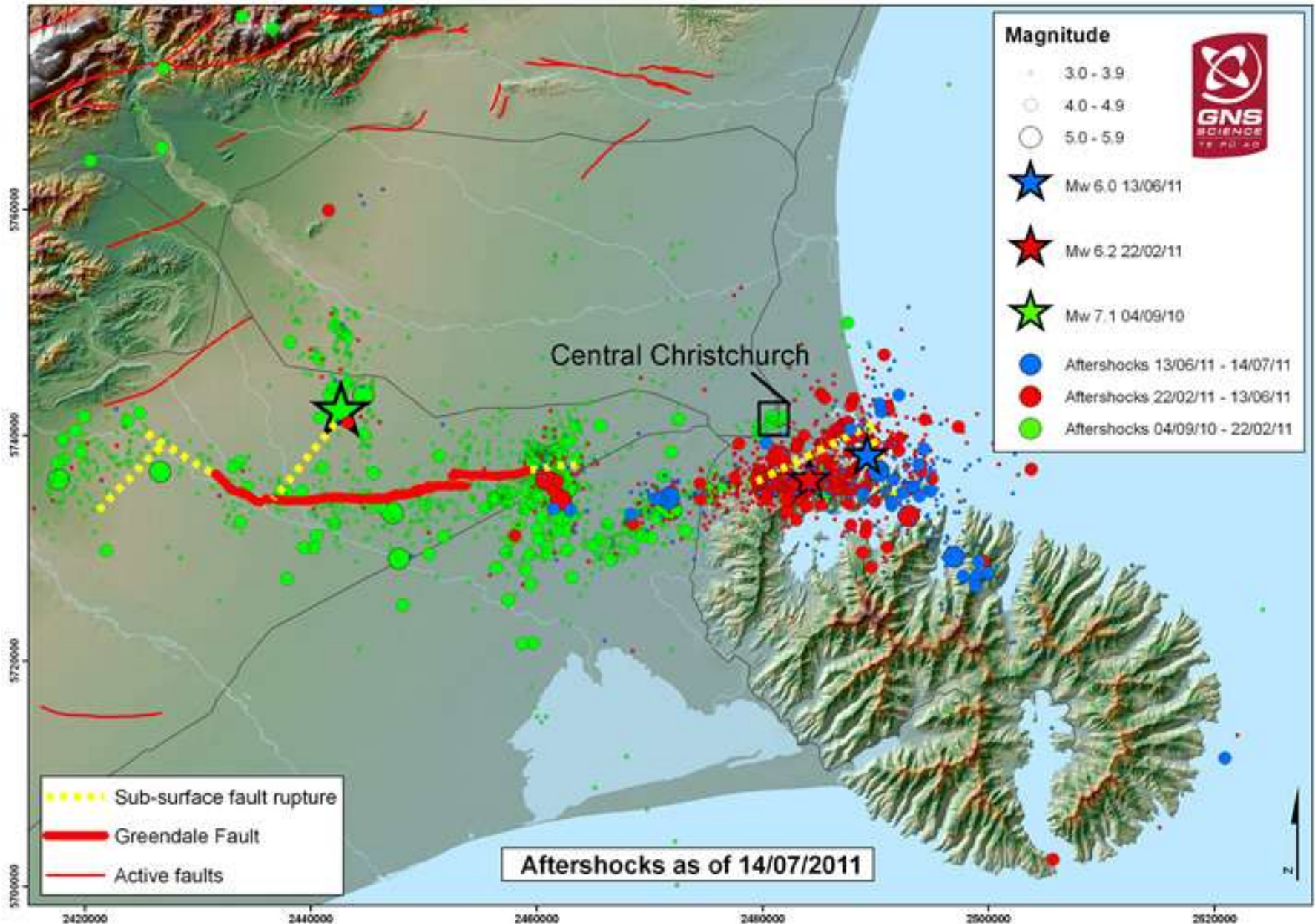
1. Individuals and families
2. Councils
3. National level agencies
4. Business community

Dust over Central Christchurch

Minutes after February 22 earthquake



Earthquake Sequence since September 2010





Christchurch



SCALE

NATIONAL DECLARATION

NEED FOR ASSURANCE

CHALLENGES

NEW ARRANGEMENT

LOCATION

BUILDING A TEAM

NOT SHORT OF WILLINGNESS

Operational Priorities

Phase 1: Rescue

Casualties

Shelter water food/utilities

Phase 2: Recovery of deceased

Welfare of residents

Phase 3: Community Wellbeing

Economic recovery

Recovery Planning

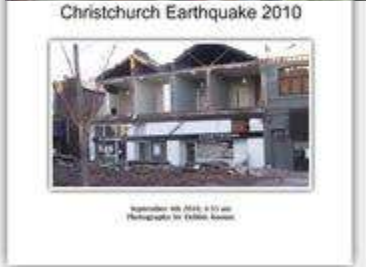


Rescue





International USAR



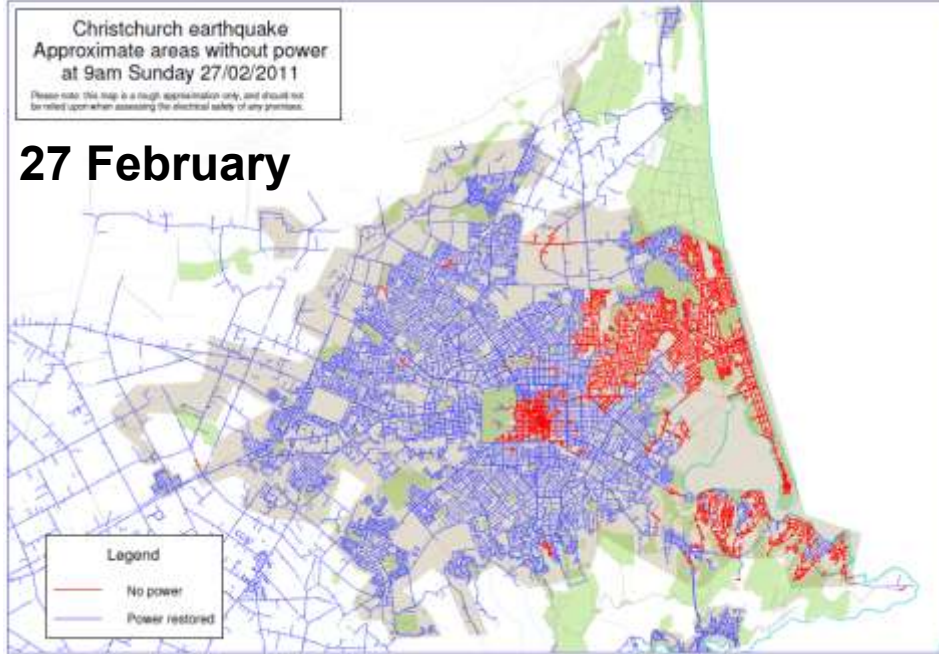
Ten months of earthquakes...

Status of Electricity Network

Christchurch earthquake
Approximate areas without power
at 9am Sunday 27/02/2011

Please note this map is a rough approximation only, and should not be relied upon when assessing the electrical safety of any premises.

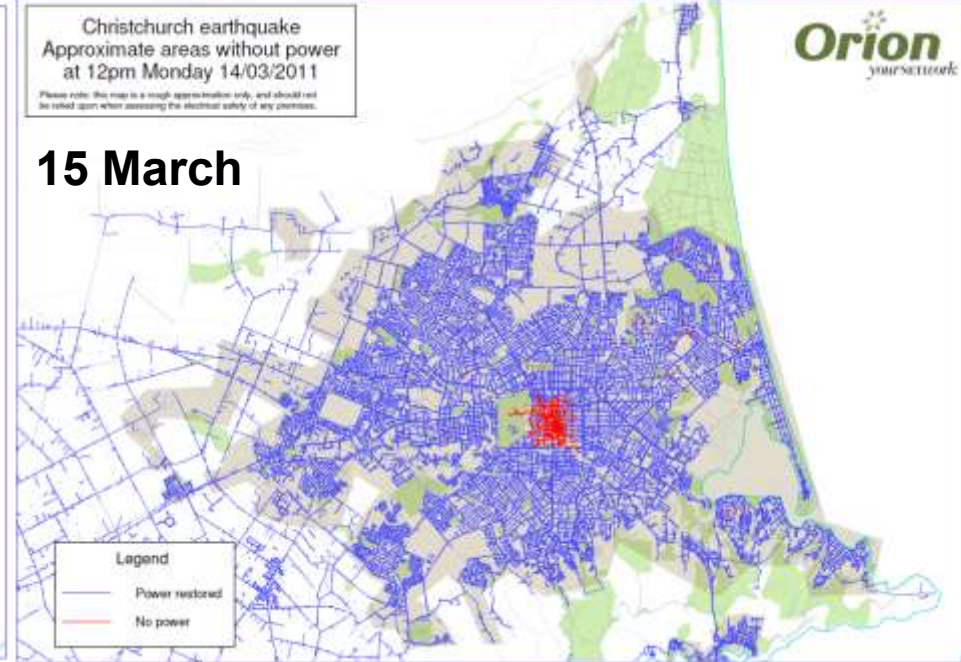
27 February



Christchurch earthquake
Approximate areas without power
at 12pm Monday 14/03/2011

Please note this map is a rough approximation only, and should not be relied upon when assessing the electrical safety of any premises.

15 March



Orion
your network



© Patrick Dunford, 2011.03.12 10:25:01



Temporary Water Supplies





Temporary Sewerage 'System'

Community Response

Professionals and volunteers together

Friends and neighbours

Large numbers of emergent community groups

Outbound calling by social agencies

Local welfare information hubs



Readiness

Business continuity

Generate Resilient Organisations

**leadership
culture
adaptability
planning**



Observations



"RESILIENT NEW ZEALAND – COMMUNITIES
UNDERSTANDING AND MANAGING
THEIR HAZARDS"

"AOTEAROA MANAHAU – HE PŪIOIO NGĀ HAPORI,
HE MĀRAMA KI Ō RĀTOU
PŪMATE ME TE WHAKAHAERE"

VISION

Resilience and the four Rs are appropriate

Arrangements for CDEM including national declaration

Research pays dividends in readiness, response and recovery

Building codes, properly applied, save lives

Communities are resilient but being ready counts

Business continuity needs to be emphasised

Establish effective relations before the emergency



"RESILIENT NEW ZEALAND – COMMUNITIES
UNDERSTANDING AND MANAGING
THEIR HAZARDS"

"AOTEAROA MANAHAU – HE PŪIOIO NGĀ HAPORI,
HE MĀRAMA KI Ō RĀTOU
PŪMATE ME TE WHAKAHAERE"

VISION